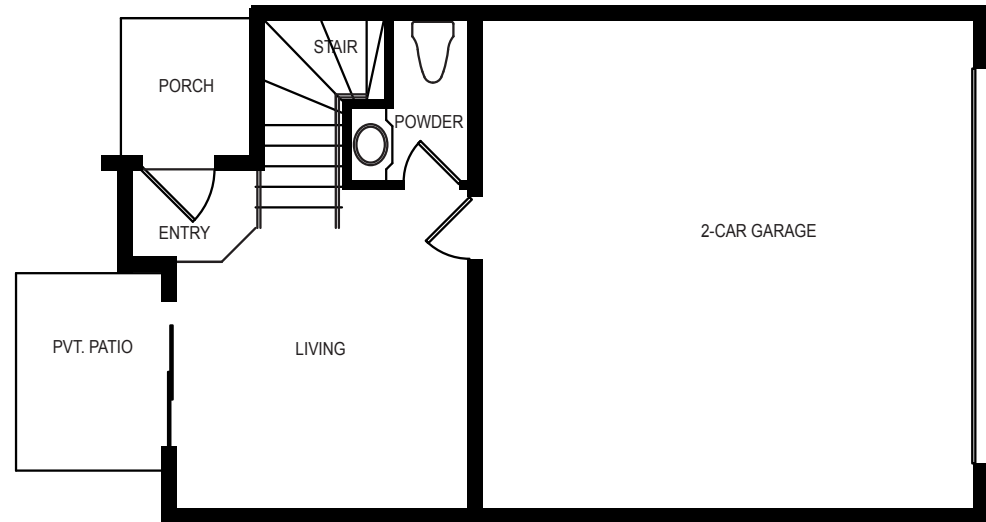


UPPER FLOOR



LOWER FLOOR



# TERAMO

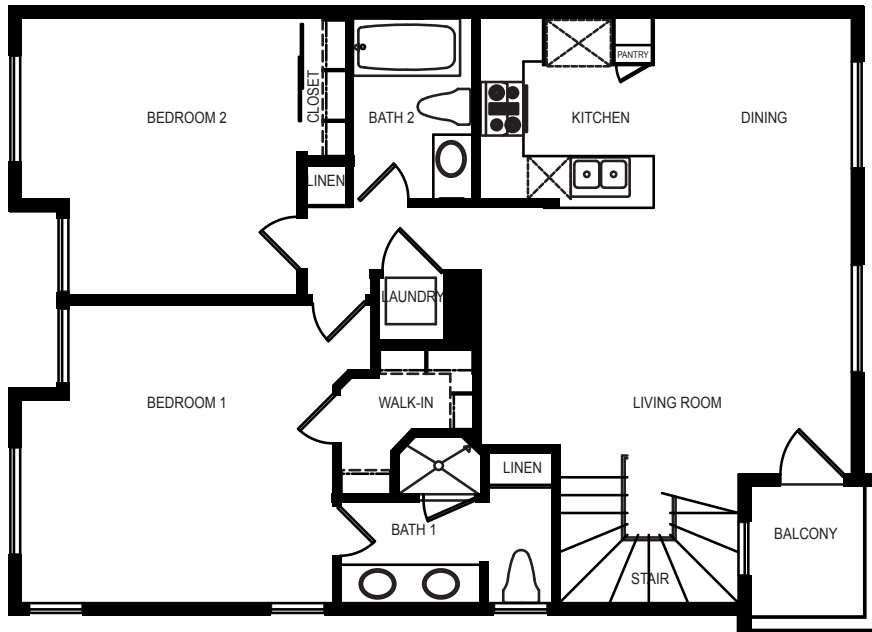
## PLAN A

1,018 SF | 2 BR 2.5 BA

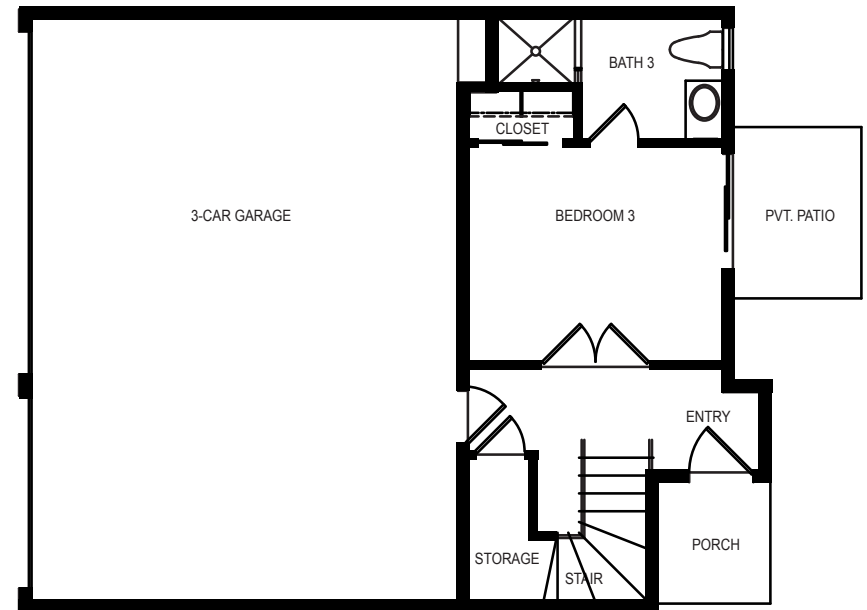


In a continuous effort to make improvements, Anastasi Development Co, LLC reserves the right to change prices, optional items, floor plans, features, exterior designs, materials and specifications without prior notice or obligation. Lot sizes and square footage are approximate. Buyers to conduct and rely on their own investigation. See Sales Representative for details. 2023. Scott Anastasi Realty DRE Lic #01375056

**ANASTASI**  
DEVELOPMENT COMPANY, L.L.C.



UPPER FLOOR



LOWER FLOOR



# TERAMO

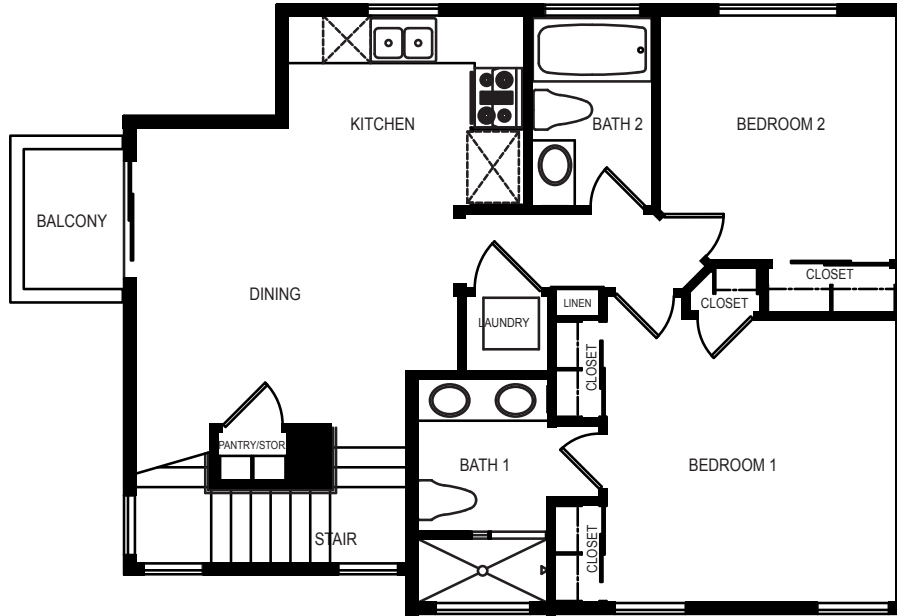
## PLAN B

1,356 SF | 3 BR 3 BA

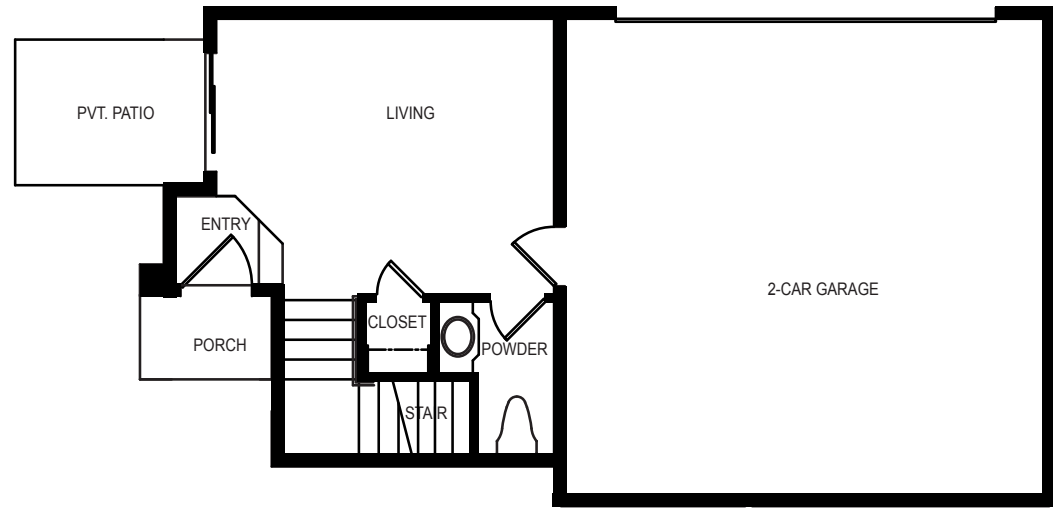


In a continuous effort to make improvements, Anastasi Development Co, LLC reserves the right to change prices, optional items, floor plans, features, exterior designs, materials and specifications without prior notice or obligation. Lot sizes and square footage are approximate. Buyers to conduct and rely on their own investigation. See Sales Representative for details.  
2023. Scott Anastasi Realty DRE Lic #01375056

**ANASTASI**  
DEVELOPMENT COMPANY, L.L.C.



UPPER FLOOR



LOWER FLOOR



# TERAMO

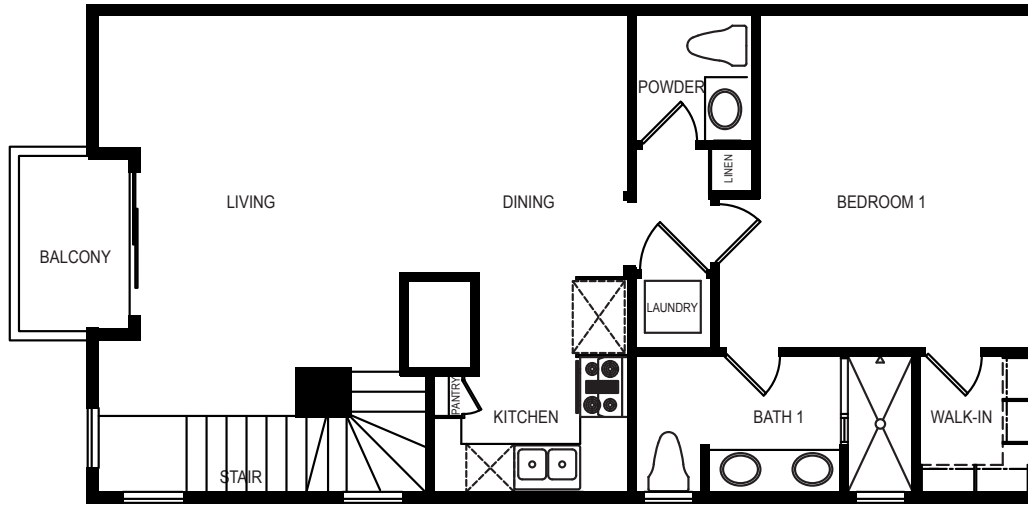
## PLAN C

1,063 SF | 2 BR 2.5 BA

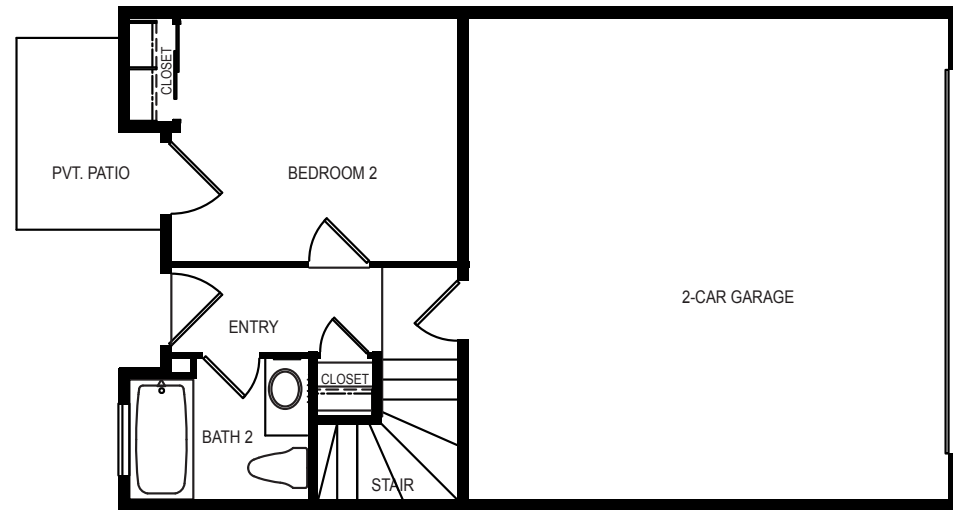


In a continuous effort to make improvements, Anastasi Development Co, LLC reserves the right to change prices, optional items, floor plans, features, exterior designs, materials and specifications without prior notice or obligation. Lot sizes and square footage are approximate. Buyers to conduct and rely on their own investigation. See Sales Representative for details. 2023. Scott Anastasi Realty DRE Lic #01375056

**ANASTASI**  
DEVELOPMENT COMPANY, L.L.C.



UPPER FLOOR



LOWER FLOOR



# TERAMO

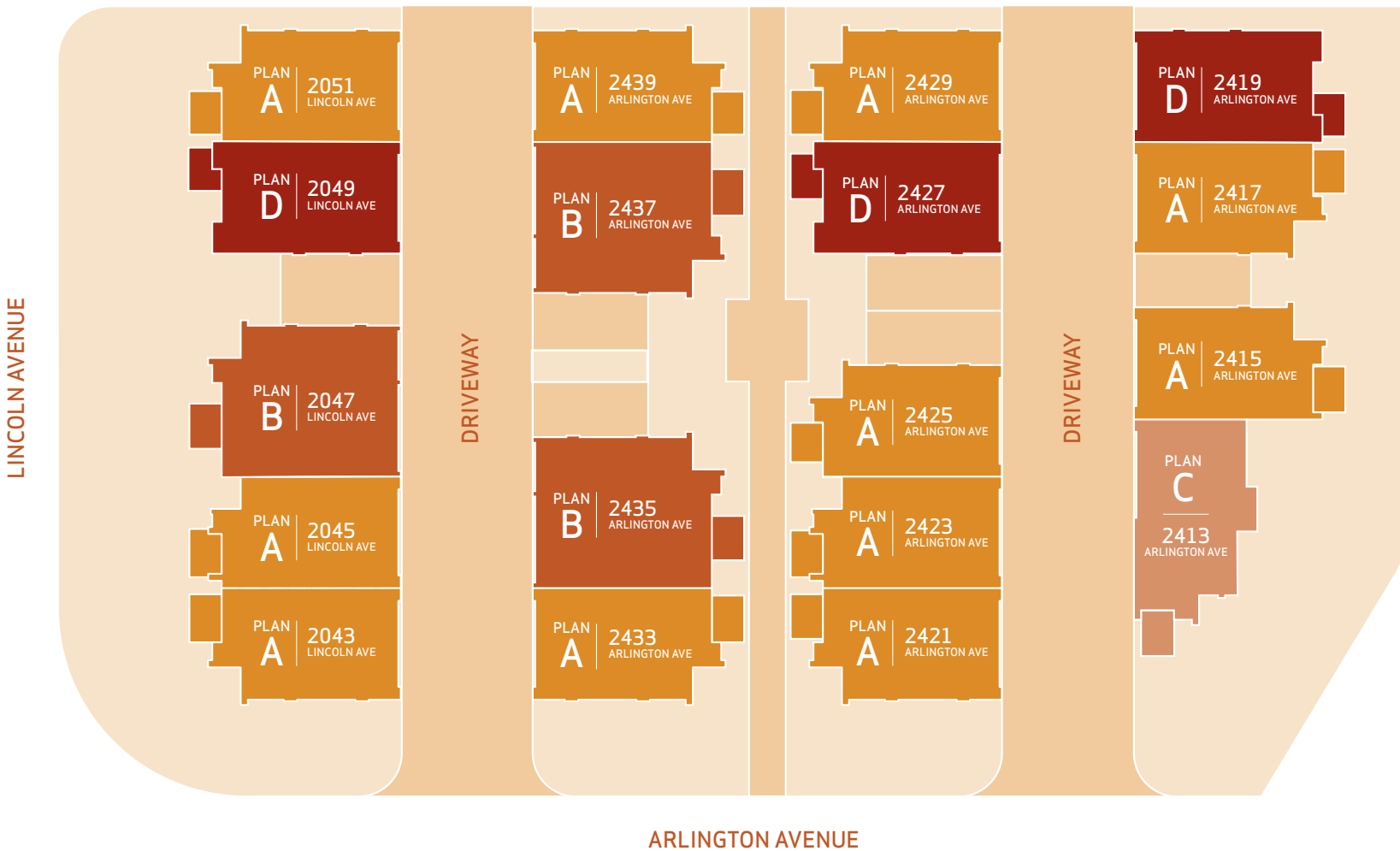
## PLAN D

1,088 SF | 2 BR 2.5 BA



In a continuous effort to make improvements, Anastasi Development Co, LLC reserves the right to change prices, optional items, floor plans, features, exterior designs, materials and specifications without prior notice or obligation. Lot sizes and square footage are approximate. Buyers to conduct and rely on their own investigation. See Sales Representative for details.  
2023. Scott Anastasi Realty DRE Lic #01375056

**ANASTASI**  
DEVELOPMENT COMPANY, L.L.C.



# TERAMO

2409 ARLINGTON AVENUE | TORRANCE, CALIFORNIA



In a continuous effort to make improvements, Anastasi Development Co, LLC reserves the right to change prices, optional items, floor plans, features, exterior designs, materials and specifications without prior notice or obligation. Lot sizes and square footage are approximate. Buyers to conduct and rely on their own investigation. See Sales Representative for details.  
2023. Scott Anastasi Realty DRE Lic #01375056

**ANASTASI**  
DEVELOPMENT COMPANY, L.L.C.